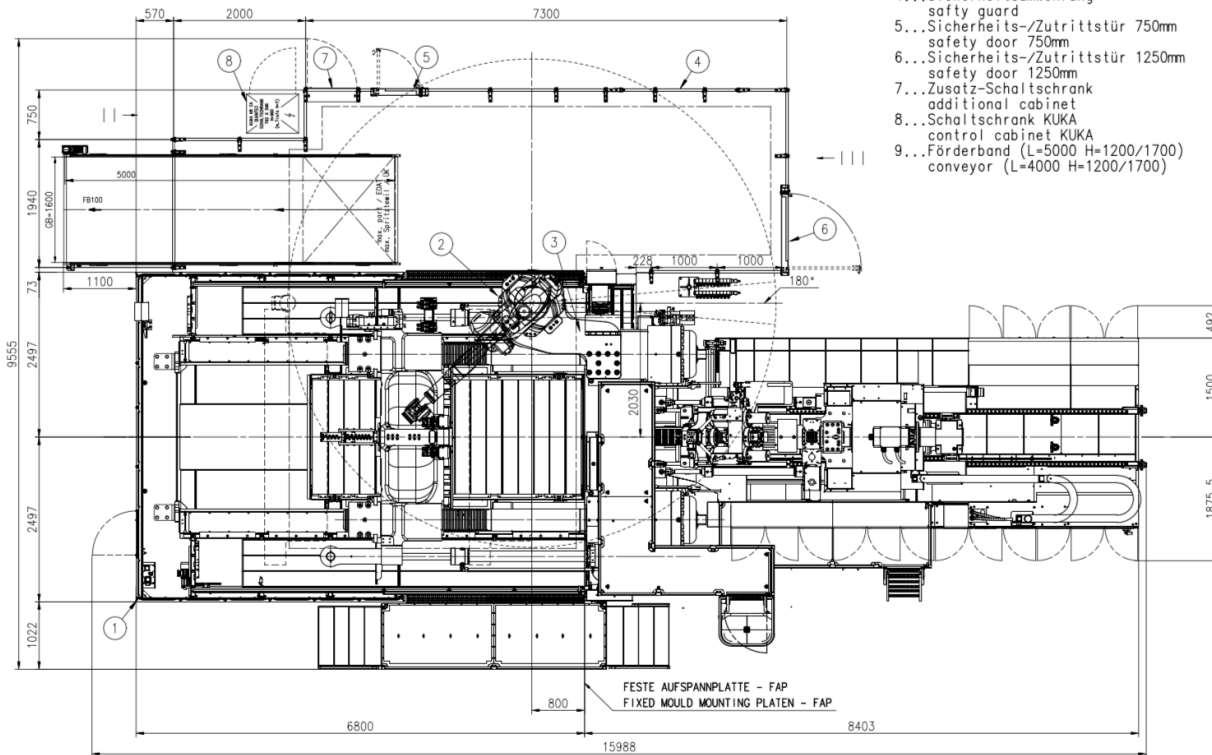
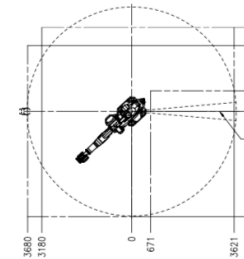


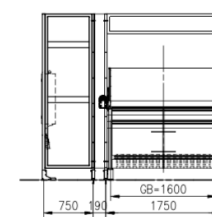
- Legende/legend:
- 1...Spritzgießmaschine  
injection mould machine
  - 2...Knickarmroboter  
6 axis robot
  - 3...Konsole  
bracket for robot
  - 4...Sicherheitsumwehrung  
safety guard
  - 5...Sicherheits-/Zutrittstür 750mm  
safety door 750mm
  - 6...Sicherheits-/Zutrittstür 1250mm  
safety door 1250mm
  - 7...Zusatz-Schaltschrank  
additional cabinet
  - 8...Schaltschrank KUKA  
control cabinet KUKA
  - 9...Förderband (L=5000 H=1200/1700)  
conveyor (L=4000 H=1200/1700)



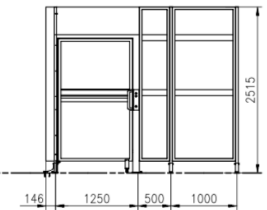
SAFE-MOVE-BEREICH



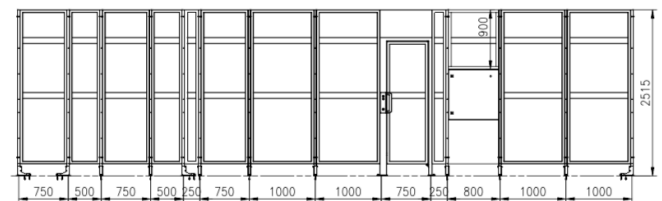
II (SCHUTZGITTER)  
II (SAFETY GUARD)



III (SCHUTZGITTER)  
III (SAFETY GUARD)



I (SCHUTZGITTER)  
I (SAFETY GUARD)



HANDLING / ROBOT:  
EASIX KR150 R3700 ultra K Fab.Nr 228320

SGM / INJECTION MOULD MACHINE:  
DUO 17060H/1560W/2700 combi Fab.Nr 228315

Fa. HANWHA, Dietfurt (DE)

MAX. ZULÄSSIGES GEWICHT FÜR ENTHAHE-/EINLEGEKOPF + SPRITZTEIL(E): 100 kg  
MAX. MANIPULATION WEIGHT [END OF ARM TOOLING + WORKPIECE(S)]:

DESIGN/PROJEKTNAME LAYOUT_SD_2171955_FABNR-228320 LAYOUT_SD_2171955_FABNR-228320		DATE/DATE 15-11-2018
DRIVING NO./NO. 3508-000-00-00-118	REV. NO./NO. 00	SHEET NO./SHEET NO. 1-30
DATE/DATE 15-11-2018	REV. NO./NO. 00	DATE/DATE 15-11-2018
DRIVING NO./NO. ETR10000 150 8015 150 2768-0K	REV. NO./NO. 150 1302 (1993)	DATE/DATE 21441_KREN_F SUPP. PRODUKTION
MATERIAL/MATERIAL ALU. ALUMINUM	MATERIAL/MATERIAL ENGL. ENGLISH	MATERIAL/MATERIAL KOR. KOREAN
ACC. TO/TO EN 10204	ACC. TO/TO EN 10204	ACC. TO/TO EN 10204

